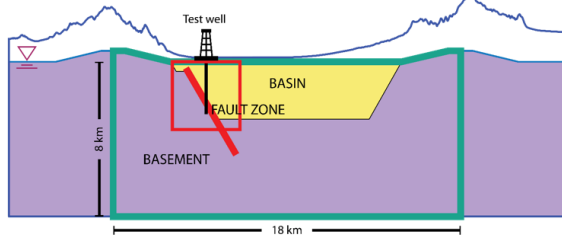
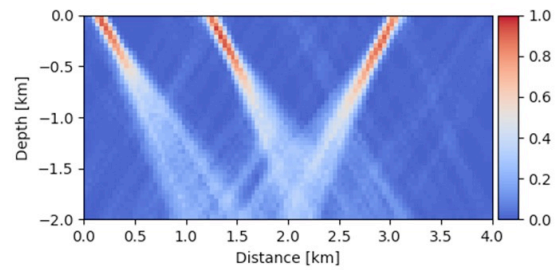


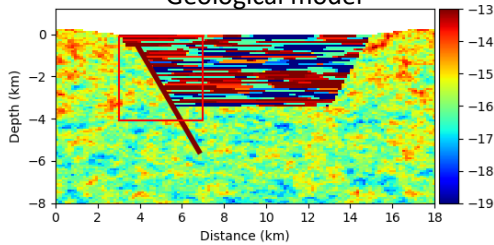
Where would you drill the next well in a geothermal exploration?



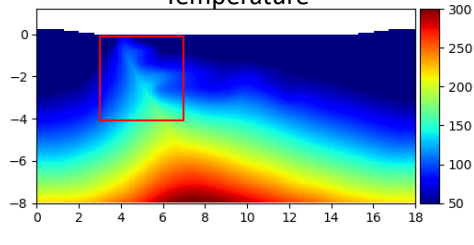
Quantify uncertainty on fault locations



Geological model



Temperature



## GeolSci 260

### Quantifying Uncertainty in Subsurface Systems

- How do we make exploration plans for battery metals or geothermal energy?
- What information should we collect?
- How much risk are we taking when making such decisions?

The answer to these questions depends on how uncertain we are about the subsurface, whether we deal with Energy, Water or Minerals. In this course, you will learn a comprehensive and practical protocol for quantifying uncertainty that will help make better informed decisions.